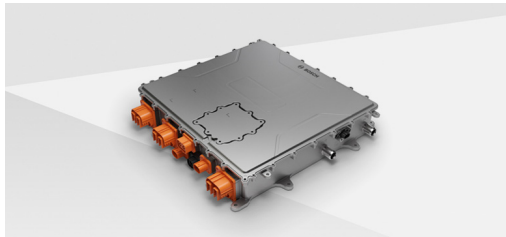
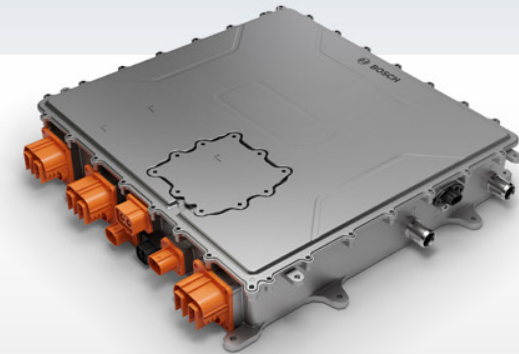


Fuel cell power transfer unit

Delivering power from fuel cell to the powertrain
and other fuel cell auxiliaries

Powertrain and
electrified mobility



- Highly integrated interface between fuel cell system and powertrain
- One unit including DC/DC-converter, power-distribution-unit and integrated functions for stack health monitoring and powernet related safety
- Control-, monitoring-, and protection functions for stack and fuel cell system included
- Full flexibility to mount on top or side of fuel cell system
- Up to 5 connectors for fuel cell auxiliaries
- 450 V – 850 V voltage level on powertrain side
- Maximum 600 A (continuous) current on stack side
- Suitable for non-isolated-, boost- or bi-directional topologies

Up to
270 kW

input power @ max. 600 A

High
efficiency

Maximum efficiency > 98.5%